

# Instructions



## **VM5HDUP / VM5UP Upgrades for VM5000HD and VM5000 Automatic Video Measurement Sets**

**075-0862-01**

[www.tektronix.com](http://www.tektronix.com)



075086201

Copyright © Tektronix, Inc. All rights reserved. Licensed software products are owned by Tektronix or its suppliers and are protected by United States copyright laws and international treaty provisions.

Use, duplication, or disclosure by the Government is subject to restrictions as set forth in subparagraph (c)(1)(ii) of the Rights in Technical Data and Computer Software clause at DFARS 252.227-7013, or subparagraphs (c)(1) and (2) of the Commercial Computer Software - Restricted Rights clause at FAR 52.227-19, as applicable.

Tektronix products are covered by U.S. and foreign patents, issued and pending. Information in this publication supercedes that in all previously published material. Specifications and price change privileges reserved.

TEKTRONIX and TEK are registered trademarks of Tektronix, Inc.

## **Contacting Tektronix**

Tektronix, Inc.  
14200 SW Karl Braun Drive  
P.O. Box 500  
Beaverton, OR 97077  
USA

For product information, sales, service, and technical support:

- In North America, call 1-800-833-9200.
- Worldwide, visit [www.tektronix.com](http://www.tektronix.com) to find contacts in your area.

## Kit Description

This kit provides instructions to upgrade VM5000HD and VM5000 Automatic Video Measurement Sets. This kit adds Option SD, Option HD, or Option VGA functionality to your instrument, depending which upgrade option(s) you purchased. Once installed, the upgrade is equivalent to the factory-installed option.

This kit supports changes implemented by ECR 30241.

## Products

**VM5000HD** B010100 and above  
**VM5000** B010100 and above

## Minimum Tool and Equipment List

Required tools and equipment	Part number
USB or PS-2 Keyboard	118-9402-00 or equivalent
USB or PS-2 Mouse	119-1636-00 or equivalent

## VM5HDUP / VM5UP Options HD/SD Kit Parts List

Quantity	Part number	Description
1 each	NS	LABEL, OPTION INFORMATION
1 each	075-0862-xx	MANUAL, KIT INSTRUCTIONS
1 each	020-2610-xx	ACCESSORY KIT; DVD SIGNAL SET, VM5000
1 each	020-2611-xx	ACCESSORY KIT; BASEBAND AND MPEG SIGNALS CD ROMS, VM5000
1 each	020-2643-xx	QUICK START MANUAL KIT FOR VM5000; INCLUDES ENGLISH, SIMPLIFIED CHINESE, TRADITIONAL CHINESE, GERMAN, JAPANESE, KOREAN, SPANISH
1 each	071-1522-xx	MANUAL; USER; VM5000

Quantity	Part number	Description
1 each	012-1680-xx	CABLE ASSY; SYNC PICKOFF CABLE

**NS- Not Saleable**

## VM5HDUP / VM5UP Option VGA Kit Parts List

Quantity	Part number	Description
1 each	NS	LABEL, OPTION INFORMATION
1 each	075-0862-xx	MANUAL, KIT INSTRUCTIONS
1 each	020-2565-xx	ACCESSORY KIT; PRODUCT SOFTWARE,VM5000
1 each	020-2634-xx	ACCESSORY KIT; PC GRAPHICS BITMAP TEST SIGNAL FILES ON CD-ROM;VM5000 VGA
1 each	020-2643-xx	QUICK START MANUAL KIT FOR VM5000; INCLUDES ENGLISH, SIMPLIFIED CHINESE,TRADITIONAL CHINESE, GERMAN, JAPANESE, KOREAN, SPANISH
1 each	071-1522-xx	MANUAL; USER;VM5000
2 each	103-0031-xx	ADAPTER, CONNECTOR; BNC ELBOW
1 each	012-1685-xx	ACCESSORY; RGBHV VIDEO MEASUREMENT INTERFACE UNIT
1 each	174-5126-xx	CA ASSY;VGA TO 5 BNC BREAKOUT CABLE, 3 FT LONG
1 each	174-5147-xx	CA ASSY;VGA TO 5 BNC BREAKOUT CABLE, 6 INCHES LONG
1 each	011-0183-xx	BNC TO BINDING POST ADAPTER
1 each	322-3143-00	RES,FXD,FILM; 301 OHM,1%,0.2W,TC=T0,MI, SMALL BODY
1 each	322-3226-00	RES,FXD; METAL FILM;2.21K OHM,1%,0.2W,TC=100 PPM;AXIAL,T&R,SMALL BODY

**NS- Not Saleable**

# Installation Instructions

To install your new option(s), you need the key number that is provided with this kit. This unique key number is valid only for the specific model number and serial number of your instrument; it will not work on any other instrument. This single key number enables all valid options for your instrument, those that were factory installed and any others that you may have previously purchased. This new key number supercedes any previous key numbers that you may already have.



---

**CAUTION.** *To avoid losing your options, do not misplace the paper label that is included with this kit. This label contains the option installation key number and should be installed on the notched-in portion of the rear panel of the instrument for future reference.*

*As a backup, you may want to copy the key number and save it with the other important papers for your instrument. If you ever need to reinstall the instrument software, you will need to reenter this key number to reenable your options.*

---

## Installing the VM5000 Software

To install the new VM5000 software, use the following procedure:

1. Connect a keyboard and mouse to the instrument (if they are not already installed).
2. Power on the instrument, and wait for it to boot.
3. Insert the VM5000 Product Software CD into the CD-ROM.
4. Wait for the installation wizard to appear and follow the instructions on screen. If the installation does not start automatically, start the installation wizard by doubling-clicking the Setup.exe file at the root level of the VM5000 Product Software CD.

If you are installing an Option VGA upgrade, this completes the installation of the software. Proceed to *Enabling Options*.

---

**NOTE.** For Option SD/HD upgrades only: the first time you run the installation wizard, it will remove the existing VM5000/VM5000HD software installation. Once the installation wizard is complete, you will need to run it a second time to install the new software.

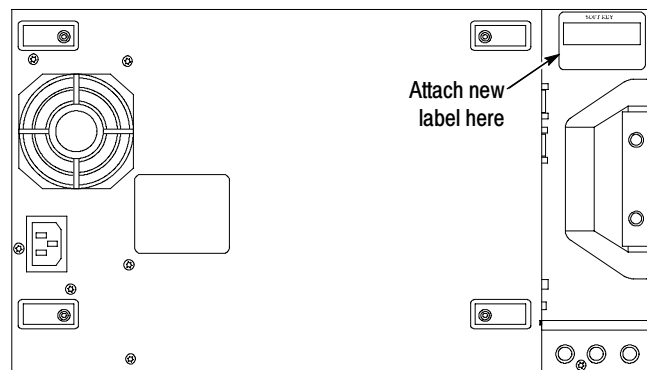
---

5. Start the installation wizard again by either ejecting and reinserting the VM5000 Product Software CD or by double-clicking the Setup.exe file at the root level of the VM5000 Product Software CD.
6. Wait for the installation wizard to appear and follow the instructions on screen to complete the installation of the software.

## Enabling Options

To enable a new option, follow these steps:

1. Connect a keyboard to the USB or PS-2 port of the instrument.
2. Power on the instrument and wait for it to boot.
3. If the instrument is powered on in the button-bar mode, select the **Menu** button (upper right corner of the display) to put the instrument into menu-bar mode. In menu-bar mode, there is a PC-style menu bar across the top of the display.
4. Pull down the **Utility** menu, and then select **Option Installation**.
5. Follow the on-screen instructions to enter the alphanumeric key number exactly as it is printed on the label.
6. Attach the label to the notched-in portion of the rear panel (see Figure 1). You can attach the new label over the existing one.

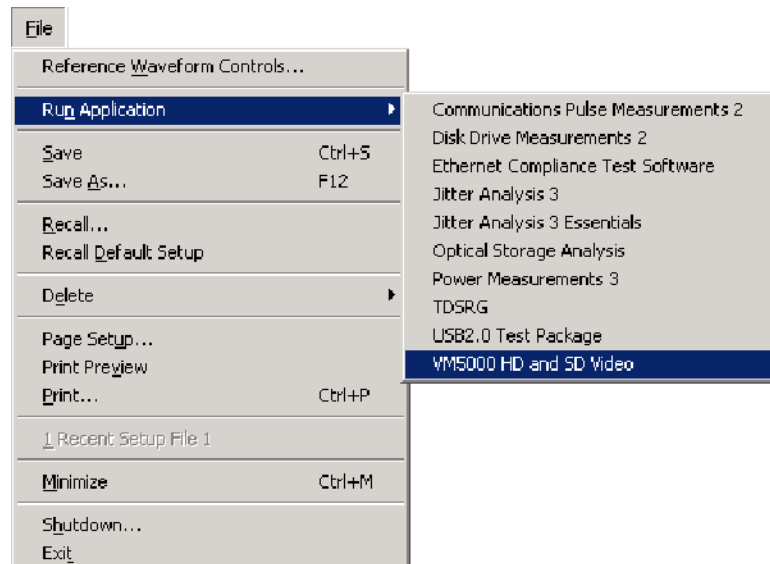


**Figure 1: Label location on the notched-in portion of the rear panel**

## Verify Software Upgrade

Follow these steps to verify that the software upgrade was successful:

1. Reboot the instrument.
2. Push the front-panel **DEFAULT SETUP** button.
3. Pull down the **File** menu, and then select **Run Application**.
4. Verify that **VM5000 HD and SD Video** or **VM5000 VGA Video** (or both if you purchased that option) appears on the menu. Figure 2 shows a sample list of applications.



**Figure 2: Run Application submenu with VM5000 listed**

For introductory information on using your new VM5000 software, Signal Sources, or hardware accessories such as the Sync Pickoff cable assembly or RGBHV Measurement Interface Unit, refer to the VM5000 Quick Start User Manual. For in-depth information, refer to the VM5000 User Manual.

■ End of document ■